

**Mayssa TIMOUMI**  
Faculty of medicine Sousse

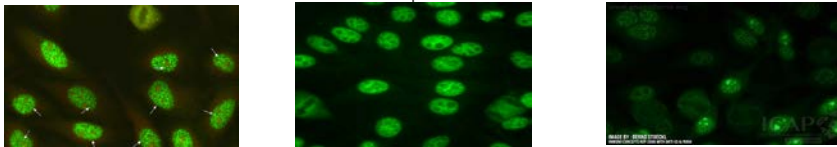
**& Sahar KAROUI**  
Faculty of medicine of Sfax

- First described in 1969: SSA/Ro antigens associated with small cytoplasmic RNAs
- **Family:** Extractable nuclear antigen antibodies (ENA)

**Target antigen:**  
**Ro60** :a 60 kDa protein component of small cytoplasmic ribonucleoprotein complexes (hY-RNA complexes)

**Anti-SS-A/Ro antibodies**

**Screening technique :** Indirect immunofluorescence on HEp-2 cells/ HEp-2000 cells (SS-A/Ro60 transfected Hep-2 cells)  
**IIF pattern on: HEp-2:** : nuclear fine speckled  
**HEp-2000:** bright speckled pattern with prominent staining of the nucleoli in the interphase nuclei of the transfected cells



**Confirmation technique :**  
-**ELISA** (Enzyme-linked immunosorbent assays) : safe, rapid, sensitive and specific  
-**FEIAs** (fluorometric enzyme-linked immunoassays)  
-**CLIAs** (chemiluminescence immunoassays) :sensitivity 89%/specificity 100%  
-**LIA** (Line immunoblots Assay) : higher specificity than ELISA

Associated disease	Sensitivity	Specificity	Positive LR*	Negative LR*
<b>Sjogren's syndrome</b>	69 %	97.3 %	26	0.3
<b>Systemic lupus erythematosus</b>	29.6 %	97.6 %	12	0.7
<b>Systemic Sclerosis</b>	7.9-21%	98-100%	4/6-11	0.8-0.9
<b>Rheumatoid arthritis</b>	9.9-20%	98-100%	8.3-11	0.8-0.9
<b>Inflammatory idiopathic myopathies</b>	23-24%	98-100%	12-14	0.8
<b>Neonatal lupus</b>	98%	68%	N/A	

\*LR: likelihood ratio

**Main disease: Sjogren's syndrome**

Presence of Ro60 antigen, awarded 3 points in the ACR/EULAR 2016 classification (diagnosis>4 points)  
Associated with more severe symptoms, resulting from the involvement of endocrine glands, lymphadenopathy, larger salivary glandular infiltrates, characteristic vasculitis and longer duration of the disease

**Clinical features:**

Hematologic changes, photosensitivity, skin involvement, Raynaud's phenomenon and dryness

**Transplacental passage of anti-SSA/Ro and/or anti-SSB exposes the foetus to congenital heart block (2%).**

**Recurrence rate is nine times higher in subsequent pregnancies**



**Pregnant women with connective tissue diseases should be screened for these abs.**



# Associated diseases

- La première description des anti-Ro remonte à (Clarck, 1969), anti-SSA et anti-SSB (Alspaugh, 1975).